

# Rumney Models Price List – July 2016

www.rumneymodels.co.uk  
Rumney Models, 7 Hurlingham Road, Bristol, BS7 9BA  
justinnewitt@gmail.com

This list replaces all previous lists.  
Items are 4mm scale and are suitable for OO/EM & P4 except where noted.

## New Items

### 4mm Scale

United Dairies Milk Tank Plates – 2 Types (**A.21A & A.21B**)

Unigate Creameries Milk Tank Plates (**A.22**)

Wagon coupling Hooks (**B.94**)

BR Instanter links (**B.95A**)

LNER steel open detailing – Replacement end stanchions (**B.101**) – New code

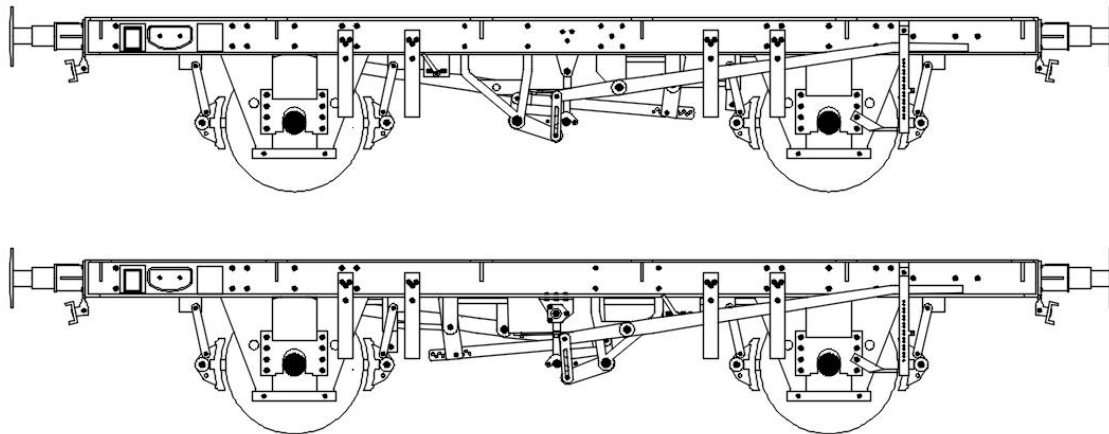
LMS Steel ended wooden open detailing (**B.101**)

BR Steel ended wooden open (**B.102**)

### 7mm Scale

United Dairies Milk Tank Plates – 2 Types (**OA.21A & OA.21B**)

Unigate Creameries Milk Tank Plates (**OA.22**)



## Index

Milk tank chassis and detailing components	Pages 2 & 3
Wagon chassis	Pages 3, 4 & 5
Wagon detailing	Page 5
Wagon kits	Pages 6 & 7
Sprung diesel bogies	Page 7
Sprung coach bogies	Page 8
7mm scale items	Page 8
S scale items	Page 9

## 4mm Scale

### Sprung Milk Tank Chassis and Detailing Parts

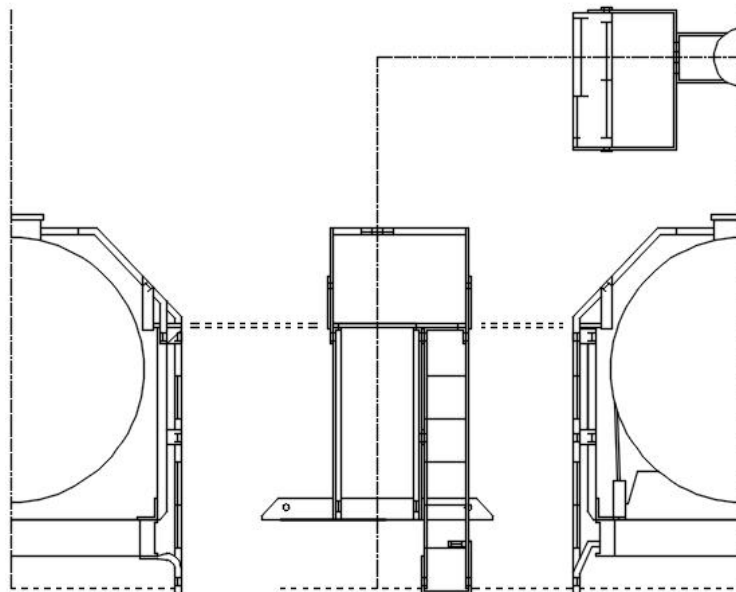
Designed for use with the David Geen milk tank kits. Etch and spring wire (where appropriate) only.

#### Milk Tanks Chassis

Code	Description	Price per unit
A.01	GWR Standard Milk Tank Chassis <i>20'6" long for the majority of GWR milk tanks</i>	£11
A.02	GWR Long Milk Tank Chassis <i>A longer 21'6" chassis for twin tank vehicles</i>	£11
A.03	LMS Early Milk Tank Chassis <i>For LMS milk tanks built before around 1942</i>	£11
A.04	LMS Late Milk Tank Chassis <i>For LMS milk tanks built after around 1942</i>	£11

#### Detailing Parts

A.07	United Dairies SR/GWR Platforms <i>The distinctive platforms fitted to some United Dairies milk tanks</i>	£7
A.08	SR/GWR Platform construction jig <i>Needed to build A.07</i>	£5
A.09	GWR Detailing <i>GWR lever brakegear, brake shoes/yolks, tiebars and ladders</i>	£7
A.10	GWR Alternative Ladders and Walkways <i>Partial platforms, long ladders and planked type walkways</i>	£7
A.11	LMS Detailing <i>Brake shoes/yolks, tiebars and alternative ladders</i>	£7
A.12	Milk Tank Formers <i>For constructing different diameter tanks from brass sheet</i>	£6



## Milk Tank Plates

Code	Description	Price per unit
A.21A	United Dairies Ltd Milk Tank Plates - Type A <i>Company plates for United Dairies milk tanks</i>	£2.50
A.21B	United Dairies Ltd Milk Tank Plates - Type B <i>Company plates for United Dairies milk tanks</i>	£2.50
A.22	Unigate Creameries Milk Tank Plates <i>Company/number plates for Unigate milk tanks</i>	£2.50



- United Dairies Type A



- United Dairies Type B

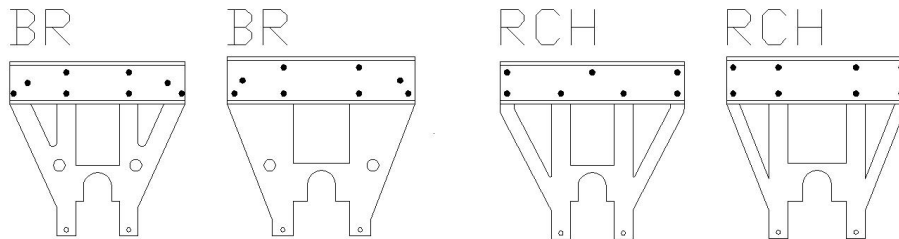


- Unigate Creameries

The United Dairies plates were common in the 1950s but could also be seen through to the 1970s. Type A was much more common than type B. Unigate plates would be found on wagons post 1959. The Unigate plates have the wagon number on the plate. I have done plates for most Unigate diagrams. Please enquire first if you are after plates for specific diagrams. If you aren't worried about diagrams then please say so when ordering. Etched on 0.1mm stainless steel and supplied in pairs and painted.

## Sprung Wagon Chassis

These are comprehensive and include solebars and headstocks. They are designed for use with Parkside Dundas, Red Panda and, in the case of B.06, Chivers Finelines plastic body kits. Etch and spring wire only. The following notation for axleguard types is used:



## BR Clasp Brake

B.01	BR 17'6" x 10' BR Clasp Brake Chassis <i>For BR standard vans, Conflats, Shocvans, Shocopens, Lowfits, etc</i>	£10
B.02	BR 16'6" x 10' BR Clasp Brake Chassis – 26T Iron Ore Tippler <i>For diagram 1/165 iron ore tipplers</i>	£10
B.03	BR 16'6" x 10' BR Clasp Brake Chassis – 13T Sand Tippler <i>For diagram 1/073 sand tipplers</i>	£10
B.04	BR 16'6" x 9' BR Clasp Brake Chassis – 16T Welded Mineral <i>For clasp braked diagram 1/108, 1/114 and 1/117 minerals</i>	£10
B.05	Additional Parts for Riveted 16T Clasp Braked Minerals <i>For use with B.04 to produce a chassis for the rare clasp braked 1/109s</i>	£3.50

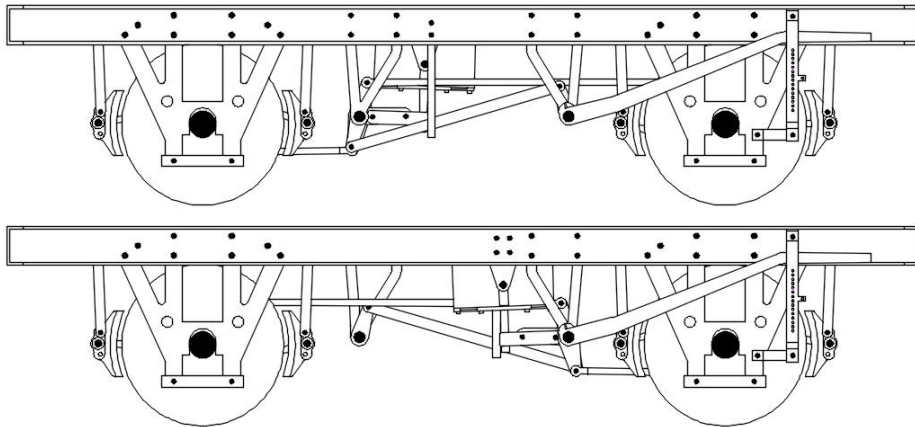
Code	Description	Price per unit
B.06	BR 21'6" x 12' BR Clasp Brake Chassis – 21T Mineral <i>For diagram 1/119 'MDVs' (twin vacuum cylinders/changeover levers)</i>	£12
B.08	BR 27' x 15' BR Clasp Brake Chassis – 22T Plate (new builds) <i>For diagram 1/434 Plate wagons built new with the BR clasp brake</i>	£15
B.09	BR 27' x 15' BR Clasp Brake Chassis – 22T Plate (retrofits) <i>For diagram 1/430 and 1/431 Plate wagons retrofitted with the BR clasp brake in the late 50s/early 60s</i>	£15

### **Morton/Lifting Link Pushrod Brakegear**

B.11	BR 17'6" x 10' Morton Brake Chassis <i>For BR standard vans, Conflats, Shocvans, Shocopens, opens, etc</i>	£10
B.12	RCH 17'6" x 10' Morton Brake Chassis <i>For vans, Conflats, Shocvans, Shocopens, opens, etc</i>	£10
B.13	BR 16'6" x 9' Morton Brake Chassis – 16T Welded Mineral <i>For the standard welded body, Morton braked 16T mineral wagons</i>	£8
B.14	Additional Vacuum Braked 16T Mineral Parts <i>Use with B.13 to produce the mid-sixties Morton 4 shoe vacuum braked 16T welded minerals – sufficient for 2 wagons</i>	£3.50
B.15	BR 16'6" x 9' Morton Brake Chassis – 16T Riveted Mineral <i>For diagram 1/109 riveted 16T minerals</i>	£8
B.16	BR 16'6" x 9' Independent Brake Chassis – 16T Welded Mineral <i>For early 16T welded minerals, covers the following diagrams: 1/102 (with BR W-Irons), 1/104, 1/106, 1/108 and 1/111</i>	£9
B.17	BR 16'6" x 9' Independent Brake Chassis – 16T Riveted Mineral <i>For diagram 1/103 (with BR W-Irons) and 1/105 16T minerals</i>	£9
B.18	Additional RCH W-Iron Parts for Independent Brake Minerals <i>Use with B.16 or B.17 to produce the earlier RCH W-Iron fitted LMS and LNER minerals. Intended for use with modified Parkside bodies</i>	£3.50
B.21	BR 21'6" x 12' Lifting Link Brake Chassis – Welded Minerals <i>For diagram 1/107 21T &amp; diagram 1/115 &amp; 1/118 24½T minerals</i>	£11
B.22	BR 21'6" x 12' Lifting Link Brake Chassis – 21T Riveted Minerals <i>For diagram 1/110 minerals</i>	£11
B.23	RCH 21'6" x 12' Lifting Link Brake Chassis <i>For pre-Nationalisation 20/21T minerals</i>	£11
B.24	BR 16'6" x 10' Independent Brake Chassis – 27T Iron Ore <i>For diagram 1/184 iron ore tippers</i>	£9
B.25	BR 16'6" x 9' Independent Brake Chassis – 27T Iron Ore <i>For diagram 1/181, 1/182 &amp; 1/183 iron ore tippers</i>	£9
B.26	BR 16'6" x 9' Morton Brake Chassis – 13T Sand Tippler <i>For diagram 1/071 &amp; 1/072 sand tippers</i>	£9
B.27	27' x 15' Lifting Link Brake Chassis – 22T Plate <i>For LMS, LNER and BR unfitted Plate wagons. Note that the kit contains both RCH and BR type axleguards</i>	£15
B.28	BR 21'6" x 12' Lifting Link Brake Chassis – 21T Hopper <i>For diagram 1/146 21T coal hoppers. Includes parts for both fitted and unfitted wagons</i>	£13

## LMS/Derby/LNER Clasp Brake

Code	Description	Price per unit
B.51	BR 17'6" x 10' LMS Clasp Brake Chassis <i>For Vans, Opens, Shocopens, Conflats, etc</i>	£12
B.52	RCH 17'6" x 10' LMS Clasp Brake Chassis <i>For Vans, Opens, Conflats, etc</i>	£12
B.53	BR 17'6" x 10' Derby Clasp Brake Chassis <i>For lot 3082 and 3232 Shocopens and the Vanwides</i>	£12
B.61	BR 17'6" x 10' LNER Clasp Brake <i>For Vans, Shocvans, Opens, Lowfits, etc</i>	£11



## Wagon Detailing Parts

Additional components for use with Rumney Models wagon chassis

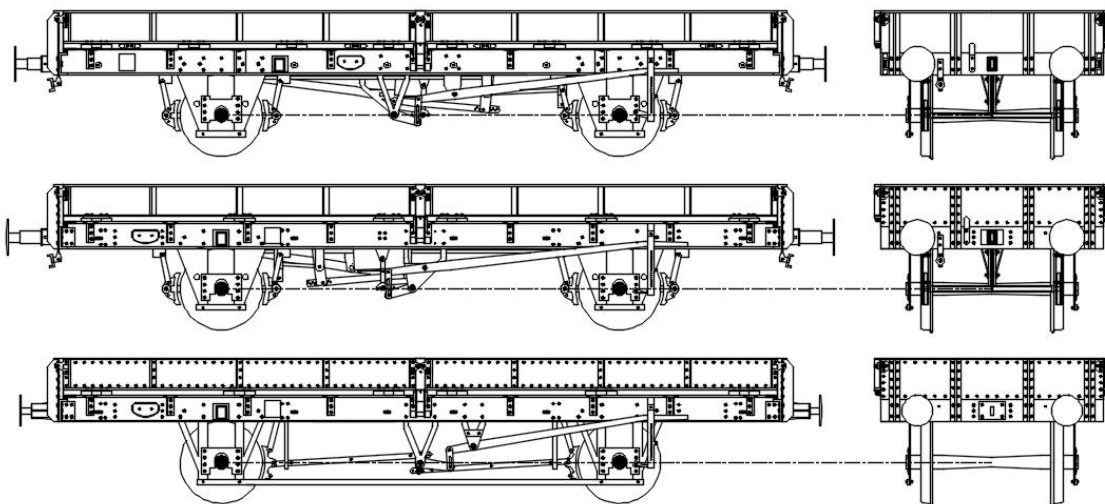
B.91	Brackets and Covers for Shock Absorbing Wagons <i>An etch to provide brackets and covers for the distinctive shock absorbing gear used on opens and vans. GWR and LMS/BR variations are covered. Requires 8BA or M2 bolt thread for the springs</i>	£2.50
B.92	Tarpaulin Bar Detailing <i>For BR/LMS open wagons with corrugated steel ends. Both early and late types are included. Sufficient parts for two wagons. Wire for the bar is required.</i>	£3
<b>B.94</b>	Wagon Coupling hooks <i>Sufficient for 7 wagons</i>	£1.50
<b>B.95A</b>	BR Instanter links <i>Sufficient for 7 wagons</i>	£1
<b>B.101</b>	LNER/BR Steel Open Detailing <i>Etched end stanchions to replace those on the end of Parkside bodies. Two profiles are included covering LNER and BR builds. Label boards and LNE style lamp irons also included. Sufficient parts for 3 wagons.</i>	£3
<b>B.102</b>	LMS Corrugated Steel Ended Wooden Open Detailing <i>Body side capping and strapping, lamp irons and label boards.</i>	£1.50
<b>B.103</b>	BR Corrugated Steel Ended Wooden Open Detailing <i>Body side capping, lamp irons and label boards.</i>	£1

## Wagon Kits

Wagon kits are generally etch only except where noted. No bogies or castings are included.

### Bogie Steel Wagons

Code	Description	Price per unit
C.01	BR 42T Strip Coil Wagon Diagram 1/403 and 1/407 steel coil wagons. Covers the South Wales Strip Coils from 1955 onwards	£24
C.02	BR 42T Strip Coil Wagon – Wood Lined Diagram 1/401 steel coil wagons. Covers the South Wales Strip Coils up to 1955	£24
C.04	BR 32T Bogie Bolster E Detailing An “upgrade” etch for the Lima bogie bolster E model. Includes full brakegear, etched ‘queen posts’ for adding trussing from brass angle & solebar/headstock detailing.	£4.50
C.04A	BR 32T Bogie Bolster E Underframe For use with C.04 to produce a fully etched chassis. Includes solebars, headstocks and detailing	£5.50

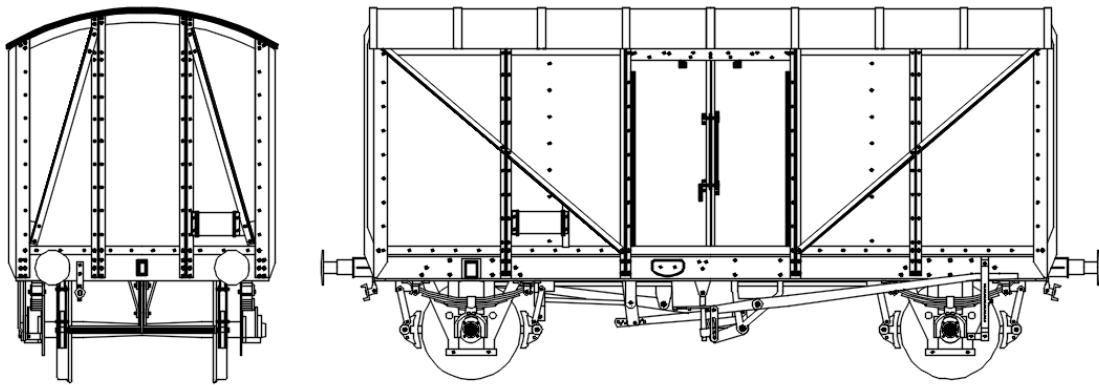


### 4 Wheel Steel Wagons

C.21A	22T Plate Wagon with Welded Body – BR Clasp Brake Chassis (new builds) BR diagram 1/434 Plate wagons built new with the BR clasp brake. Body and chassis kit B.08	£27
C.21B	22T Plate Wagon with Welded Sides and Riveted Ends – BR Clasp Brake Chassis (retrofits) <i>BR diagram 1/430 and 1/431 Plate wagons retrofitted with the BR clasp brake in the late 50s/early 60s. Body and chassis kit B.09</i>	£27
C.21C	22T Plate Wagon with Welded Sides – Lifting Link Brake Chassis <i>LMS, LNER and BR unfitted Plate wagons with welded sides. Includes both welded and riveted ends. Body and chassis kit B.27</i>	£27
C.22	22T Plate Wagon with Riveted Body – Lifting Link Brake Chassis <i>LMS &amp; LNER unfitted Plate wagons with fully riveted bodies. Body and chassis kit B.27</i>	£27

## General Merchandise Wagons

Code	Description	Price per unit
C.51	BR 1/801 12T Fish Van The final BR fish van diagram built 1957-60 with the BR clasp brake. Many were later used as parcels vans (SPV). Etched chassis and body with a cast resin roof	£38
C.53	LMS D.1892 5 Plank Open Wagon Body 'Kit' <i>Etched ends, floor and ironwork only for use with Parkside Dundas PC02A sides (not included). Suitable chassis: B.12 &amp; B.52</i>	£10
C.53A	LMS D.1892 5 Plank Open Wagon Body 'Kit' – Steel Reinforced Ends <i>Etched ends, floor and ironwork only for use with Parkside Dundas PC02A sides (not included). For wagons where the lower end planks were replaced with steel channel. Suitable chassis: B.12 &amp; B.52</i>	£12
C.54	BR 1/040 Wooden Ended Shocopen Wagon Body 'Kit' Etched ends, floor and ironwork only for use with Parkside Dundas PC02A or PC28 sides (not included). Due to steel shortages in 1952 half a lot of BR Shocopens were built with wooden rather than steel corrugated ends. Includes tarpaulin bar kit B.92. Suitable chassis: B.11 (would also require shock absorbing spring etch B.91)	£11



## Fully Sprung Diesel Bogies

An aid to producing a fully sprung diesel locomotive. P4 only. Includes etch, spring wire and custom hornblocks. Each kit is sufficient for one locomotive.

D.01	English Electric Bogies <i>For classes 37, 50, Deltic and DP2</i>	£27
D.02	Peak Bogies (including pony trucks) <i>For classes 40,44,45 &amp; 46</i>	£32
D.03	Peak Pony Trucks <i>Fits the Bachmann Peak chassis</i>	£6
D.05	Brush Type 4 Bogies <i>For classes 47 and 57</i>	£27
D.06	Warship Bogies <i>For the Bachmann Swindon class 42 model</i>	£24

### Fully Sprung Single Bolster Coach Bogies

Coach bogies that work like the real thing. Etch, spring wire and bearing pins included.  
EM/P4 only. Price is for a pair of bogies.

Code	Description	Price per unit
E.01	8'6" BR Mk1 BR1 Coach Bogies	£11
E.02	8'6" BR Mk1 Commonwealth Coach Bogies	£11
E.04	9' GWR Pressed Steel Coach Bogies	£11
E.05	9' GWR Heavy duty Coach Bogies	£11
E.06	7' GWR Coach Bogies	£11

### 7mm Scale

The Milk Tank detailing and coach bogies are redrawn and resized from the 4mm scale artwork and etched on 0.012" brass. The Milk Tank plates were drawn up from my original artwork not the 4mm version. In short these are not just straight enlargements.

#### Milk Tank Detailing

OA.07	United Dairies SR/GWR Platforms The distinctive platforms fitted to some United Dairies milk tanks	£12
OA.08	SR/GWR Platform construction jig Needed to build A.07	£10

#### Milk Tank Plates

<b>OA.21A</b>	United Dairies Ltd Milk Tank Plates - Type A <i>Company plates for United Dairies milk tanks</i>	£3.50
<b>OA.21B</b>	United Dairies Ltd Milk Tank Plates - Type B <i>Company plates for United Dairies milk tanks</i>	£3.50
<b>OA.22</b>	Unigate Creameries Milk Tank Plates <i>Company/number plates for Unigate milk tanks</i>	£3.50



- United Dairies Type A



- United Dairies Type B



- Unigate Creameries

The 7mm scale version follows the same numbering pattern as the 4mm ones. The United Dairies plates were common in the 1950s but could also be seen through to the 1970s. Type A was much more common than type B. Unigate plates would be found on wagons post 1959. They have the wagon number on the plate and I have done plates for most Unigate diagrams. Please enquire first if you are after plates for specific diagrams. If you aren't worried about diagrams then please say so when ordering. Etched on 0.1mm stainless steel and supplied in pairs and painted.



## Sprung Coach bogies

Available to order only.

Code	Description	Price per unit
OE.02	8'6" BR Mk1 Commonwealth Coach Bogies A fully sprung single bolster coach bogie in 7mm scale. Includes provision for 7mm finescale and Scale 7 wheelsets	£33

## S Scale

Redrawn and resized from the 4mm scale artwork and etched on 0.012" brass. These are not just straight enlargements. They are available to order only.

SA.01	GWR Standard 20'6" Milk Tank Components A sheet of etches covering almost everything I have done for standard GWR milk tanks but on one sheet in S Scale. Includes a fully sprung chassis, solebars, headstocks, both D/C and lever brakegear, ladders and partial platforms, walkways and tank straps. The only appropriate thing that I've done that isn't included is the United Dairies platforms. If anyone wants them then ask	£30
SB.13	BR 16'6" x 9' Morton Brake Chassis – 16T Welded Mineral <i>For the standard welded body, Morton brake 16T mineral wagons. Tailored to suit the Alan Gibson Whitemetal body.</i>	£12
SB.16	BR 16'6" x 9' Independent Brake Chassis – 16T Welded Mineral <i>For the standard welded body, Independent brake 16T mineral wagons. Tailored to suit the Alan Gibson Whitemetal body.</i>	£14
SB.51	17'6" x 10' LMS Clasp Brake Wagon Chassis For Vans, Opens, Shocopens, Conflats, etc. Specification is as per the 4mm chassis and includes both RCH and BR type axleguards	£20