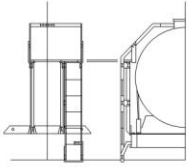


# Rumney Models

## Wagon Axlebox & Spring Castings - September 2017

### Combinations available

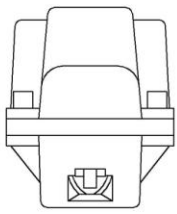
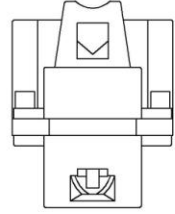
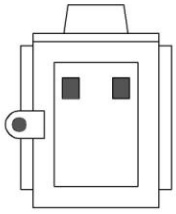
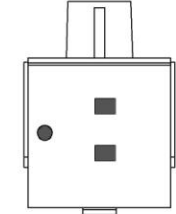
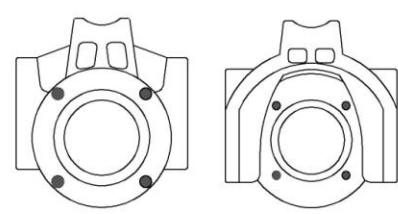
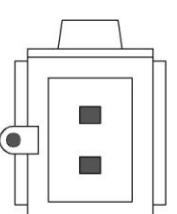
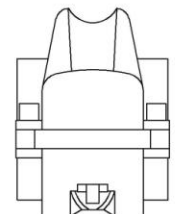
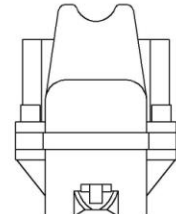
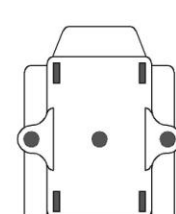
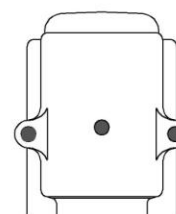
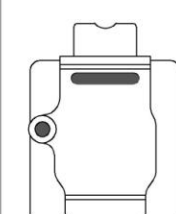
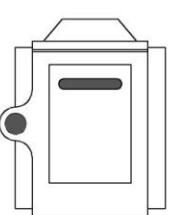
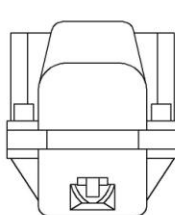
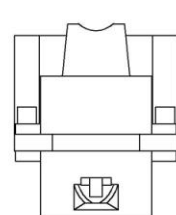
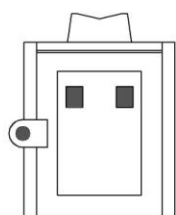
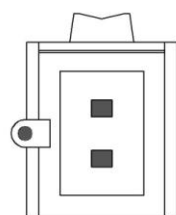
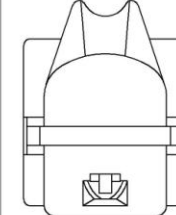
	05	06	07LM	07BR	07	08	09
<b>FA</b> - BR 2 Part	•	•	•	•			
<b>FB</b> - BR 2 Part Square	•	•	•				
<b>FC</b> - BR Welded - Horizontal Lugs	OoS	•	•				
<b>FD</b> - BR Platefront	•	•	•	•			
<b>FE</b> - Roller Bearings	OoS	•		•	•	•	•
<b>FF</b> - BR Welded - Vertical Lugs	•						
<b>FG</b> - RCH 2 Part	•						
<b>FH</b> - LMS 2 Part	•		•				
<b>FJ</b> - LMS Platefront - Vertical Front	•		•				
<b>FK</b> - LMS Platefront - Sloping Front			•				
<b>FL</b> - LNER Cast	•		•				
<b>FM</b> - LNER Welded	•			•			
<b>FN</b> - BR 2 Part HD					•		
<b>FO</b> - BR 2 Part Square HD					•		
<b>FP</b> - BR Welded HD - Horizontal Lugs					•		
<b>FQ</b> - BR Welded HD - Vertical Lugs					•		
<b>FS</b> - RCH 2 Part Cast HD					•		



# Rumney Models

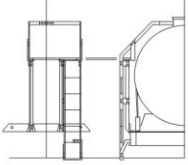
**Wagon Axlebox & Spring Castings - September 2017**

## Axleboxes

					
<b>FA</b> BR 2 Part	<b>FB</b> BR 2 Part Square	<b>FC</b> BR Welded Horizontal Lugs	<b>FD</b> BR Platefront	<b>FE</b> Roller Bearing Non-hooded & Hooded	
					
<b>FF</b> BR Welded Vertical Lugs	<b>FG</b> RCH 2 Part	<b>FH</b> LMS 2 Part	<b>FJ</b> LMS Platefront Vertical Front	<b>FK</b> LMS Platefront Sloping Front	<b>FL</b> LNER Cast
					
<b>FM</b> LNER Welded	<b>FN</b> BR 2 Part HD	<b>FO</b> BR 2 Part Square HD	<b>FP</b> BR Welded HD Horizontal Lugs	<b>FQ</b> BR Welded HD Vertical Lugs	<b>FS</b> RCH 2 Part HD

**FA-FD & FF-FM** are oil axleboxes based on prototypes with 9" x 4½" journals and are for wagons of 12T to 16T capacity.

**FN-FS** are oil axleboxes based on prototypes with 10" x 5" journals and are for wagons of 20T to 22T capacity (heavy duty - HD).



# Rumney Models

## Axleboxes continued...

**FE** are roller bearing axleboxes come with both a hooded and non-hooded type. These are separate from the spring and are designed to be attached to the bearing in the spring carrier on my suspension system except for the BR brake van ones where the bearing is attached to the spring.

All oil axleboxes come with the axlebox attached to the spring and are slotted for use with sprung underframes.

## Springs

**05, 06, 07, 08** and **09** are conventional wagon springs. Their usage is as follows:

- **05** are 5 leaf springs for 12-13T capacity wagons
- **06** are 6 leaf for 14-16T wagons
- **07** are 7 leaf springs for 20-21T wagons
- **08** are 8 leaf springs for 21-27T wagons
- **09** are for 21-27T wagons.

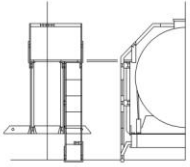
Generally the greater the capacity of the wagon the more springs but there was some crossover on the heavier wagons depending on whether they were vacuum braked or not.

**07LM** are LMS 7 leaf springs with J hangers that were found on general merchandise wagons fitted with their clasp braking system. (Rumney Models underframes B.51 and B.52)

**07BR** are BR 20T brake van springs with their own distinctive J hangers and are ideal for Dave Bradwell's underframes.

If in doubt email.

Items marked **OoS** are currently unavailable. Please email regarding when they will be available again before ordering.

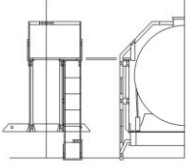


# Rumney Models

## Wagon Axlebox & Spring Castings - September 2017

### Underframes

<b>B.01</b>	FA.05	FB.05	FC.05	FD.05	FE.05	
<b>B.02</b>	FE.09					
<b>B.03</b>	FA.05	FB.05	FC.05	FD.05		
<b>B.04</b>	FA.06	FB.06	FC.06	FD.06		
<b>B.06</b>	FE.09					
<b>B.08</b>	FE.08					
<b>B.09</b>	FE.08					
<b>B.11</b>	FA.05	FB.05	FC.05	FD.05	FH.05	FL.05
	FM.05					
<b>B.12</b>	FA.05	FB.05	FC.05	FD.05	FG.05	FH.05
	FJ.05	FL.05	FM.05			
<b>B.13</b>	FA.06	FB.06	FC.06	FD.06		
<b>B.15</b>	FA.06	FB.06	FC.06	FD.06		
<b>B.16</b>	FA.06	FB.06	FC.06	FD.06		
<b>B.17</b>	FA.06	FB.06	FC.06	FD.06		
<b>B.21 (1)</b>	FE.07	FN.07	FM.07	FP.07	FQ.07	FS.07
<b>B.21 (2)</b>	FE.08					
<b>B.22</b>	FN.07	FM.07	FP.07	FQ.07	FS.07	
<b>B.23</b>	FN.07	FM.07	FP.07	FQ.07	FS.07	
<b>B.24</b>	FE.08					
<b>B.25</b>	FE.08					
<b>B.26</b>	FA.05	FB.05	FC.05	FD.05	FL.05	FM.05
<b>B.27</b>	FE.07	FN.07	FM.07	FP.07	FQ.07	FS.07
<b>B.28</b>	FE.07 (3)	FE.08 (3)	FN.07	FM.07	FP.07	FQ.07
<b>B.30</b>	FA.05	FB.05	FC.05	FD.05	FE.05	
<b>B.51</b>	FA.07LM	FB.07LM	FC.07LM	FD.07LM	FM.07LM	



# *Rumney Models*

## **Wagon Axlebox & Spring Castings - April 2017**

### **Underframes continued...**

<b>B.52</b>	FA.07LM	FB.07LM	FC.07LM	FD.07LM	FH.07LM	FJ.07LM
	FL.07LM	FM.07LM				
<b>B.53</b>	FA.05	FB.05	FC.05	FD.05		
<b>B.54</b>	FE.07					
<b>B.61</b>	FA.05	FB.05	FC.05	FD.05		
<b>B.71</b>	FA.06					
<b>C.51</b>	FE.06					

#### Notes:

- (1) - Underframe B.21 built for a 21T mineral
- (2) - Underframe B.21 built for a 24½T mineral
- (3) - 21T hoppers fitted with roller bearings: Unfitted and early vacuum braked examples had 7 leaf springs, later vacuum braked hoppers had 8 leaf springs.