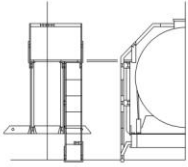


Rumney Models

Wagon Axlebox & Spring Castings - September 2018

Combinations available

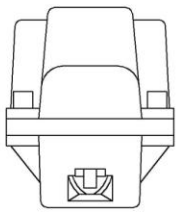
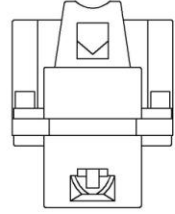
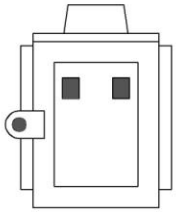
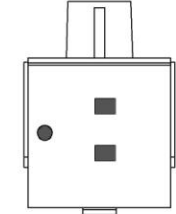
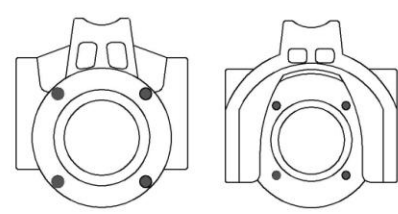
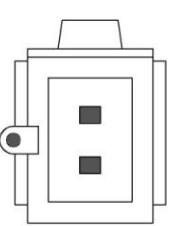
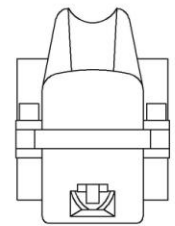
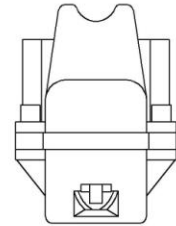
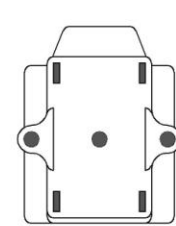
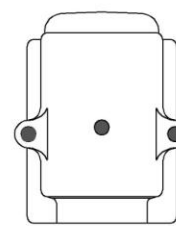
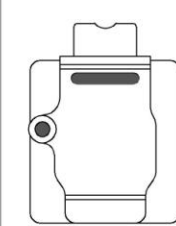
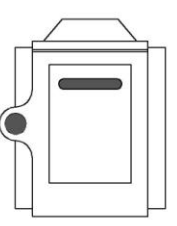
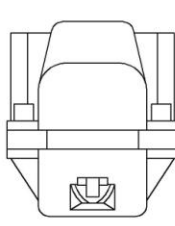
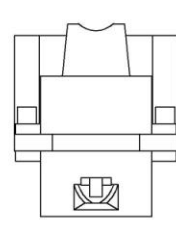
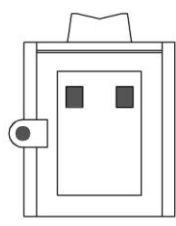
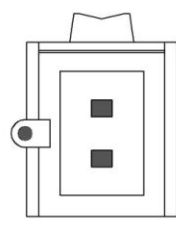
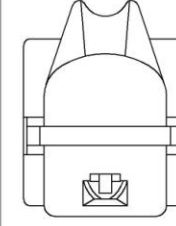
	05	06	07LM	07BR	07	08	09
FA - BR 2 Part	•	•	•	•			
FB - BR 2 Part Square	•	•	•				
FC - BR Welded - Horizontal Lugs	•	•	•				
FD - BR Platefront	•	•	•	•			
FE - Roller Bearings	OoS	•		•	•	•	•
FF - BR Welded - Vertical Lugs	•						
FG - RCH 2 Part	•	•					
FH - LMS 2 Part	•		•				
FJ - LMS Platefront - Vertical Front	•		•				
FK - LMS Platefront - Sloping Front	•	•	•				
FL - LNER Cast	•		•				
FM - LNER Welded	•	•		•			
FN - BR 2 Part HD					•		
FO - BR 2 Part Square HD					•		
FP - BR Welded HD - Horizontal Lugs					•		
FQ - BR Welded HD - Vertical Lugs					•		
FS - RCH 2 Part Cast HD					•		



Rumney Models

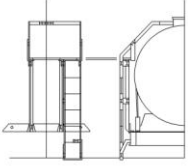
Wagon Axlebox & Spring Castings - September 2017

Axleboxes

					
FA BR 2 Part	FB BR 2 Part Square	FC BR Welded Horizontal Lugs	FD BR Platefront	FE Roller Bearing Non-hooded & Hooded	
					
FF BR Welded Vertical Lugs	FG RCH 2 Part	FH LMS 2 Part	FJ LMS Platefront Vertical Front	FK LMS Platefront Sloping Front	FL LNER Cast
					
FM LNER Welded	FN BR 2 Part HD	FO BR 2 Part Square HD	FP BR Welded HD Horizontal Lugs	FQ BR Welded HD Vertical Lugs	FS RCH 2 Part HD

FA-FD & FF-FM are oil axleboxes based on prototypes with 9" x 4½" journals and are for wagons of 12T to 16T capacity.

FN-FS are oil axleboxes based on prototypes with 10" x 5" journals and are for wagons of 20T to 22T capacity (heavy duty - HD).



Rumney Models

Axleboxes continued...

FE are roller bearing axleboxes come with both a hooded and non-hooded type. These are separate from the spring and are designed to be attached to the bearing in the spring carrier on my suspension system except for the BR brake van ones where the bearing is attached to the spring.

All oil axleboxes come with the axlebox attached to the spring and are slotted for use with sprung underframes.

Springs

05, 06, 07, 08 and **09** are conventional wagon springs. Their usage is as follows:

- **05** are 5 leaf springs for 12-13T capacity wagons
- **06** are 6 leaf for 14-16T wagons
- **07** are 7 leaf springs for 20-21T wagons
- **08** are 8 leaf springs for 21-27T wagons
- **09** are for 21-27T wagons.

Generally the greater the capacity of the wagon the more springs but there was some crossover on the heavier wagons depending on whether they were vacuum braked or not.

07LM are LMS 7 leaf springs with J hangers that were found on general merchandise wagons fitted with their clasp braking system. (Rumney Models underframes B.51 and B.52)

07BR are BR 20T brake van springs with their own distinctive J hangers and are ideal for Dave Bradwell's underframes.

Other Types of Axleboxes and Springs

FN.09GW GWR Brake Van Springs and BR 2 Part HD Oil Axleboxes

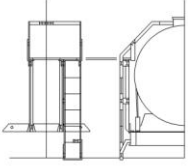
FS.09GW GWR Brake Van Springs and RCH 2 Part HD Oil Axleboxes

FT.10LMST LMS Stanier Brake Van Springs Axleboxes

GWR brake van springs are the later swing link type with 10" journals for diagrams AA.15 (last batch), AA.19, AA.20, AA.21, AA.23 - They will need backing plates B.112 for the reinforced axlebox guides.

If in doubt email.

Items marked **OoS** are currently unavailable. Please email regarding when they will be available again before ordering.

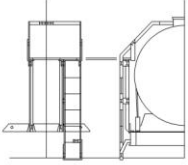


Rumney Models

Wagon Axlebox & Spring Castings - September 2018

Underframes

B.01	FA.05	FB.05	FC.05	FD.05	FE.05	
B.02	FE.09					
B.03	FA.05	FB.05	FC.05	FD.05		
B.04	FA.06	FB.06	FC.06	FD.06		
B.06	FE.09					
B.08	FE.08					
B.09	FE.08					
B.11	FA.05	FB.05	FC.05	FD.05	FH.05	FL.05
	FM.05					
B.12	FA.05	FB.05	FC.05	FD.05	FG.05	FH.05
	FJ.05	FK.05	FL.05	FM.05		
B.13	FA.06	FB.06	FC.06	FD.06	FM.06	
B.15	FA.06	FB.06	FC.06	FD.06	FM.06	
B.16	FA.06	FB.06	FC.06	FD.06	FM.06	
B.17	FA.06	FB.06	FC.06	FD.06	FM.06	
B.21 (1)	FE.07	FN.07	FM.07	FP.07	FQ.07	FS.07
B.21 (2)	FE.08					
B.22	FN.07	FM.07	FP.07	FQ.07	FS.07	
B.23	FN.07	FM.07	FP.07	FQ.07	FS.07	
B.24	FE.08					
B.25	FE.08					
B.26	FA.05	FB.05	FC.05	FD.05	FL.05	FM.05
B.27	FE.07	FN.07	FM.07	FP.07	FQ.07	FS.07
B.28	FE.07 (3)	FE.08 (3)	FN.07	FM.07	FP.07	FQ.07
B.30	FA.05	FB.05	FC.05	FD.05	FE.05	
B.51	FA.07LM	FB.07LM	FC.07LM	FD.07LM	FM.07LM	



Rumney Models

Wagon Axlebox & Spring Castings - September 2018

Underframes continued...

B.52	FA.07LM	FB.07LM	FC.07LM	FD.07LM	FH.07LM	FJ.07LM
	FL.07LM	FM.07LM				
B.53	FA.05	FB.05	FC.05	FD.05		
B.54	FE.07					
B.61	FA.05	FB.05	FC.05	FD.05		
B.71	FA.06					
B.75	FG.06					
B.76	FG.06					
C.51	FE.06					

Notes:

- (1) - Underframe B.21 built for a 21T mineral
- (2) - Underframe B.21 built for a 24½T mineral
- (3) - 21T hoppers fitted with roller bearings: Unfitted and early vacuum braked examples had 7 leaf springs, later vacuum braked hoppers had 8 leaf springs.