

Rumney Models - Dave Holt's Ivatt Class 2 Detailing Parts

This set of 'instructions' covers Rumney Models kit X.21. This kit provides a set of detailing parts for the Ivatt and BR standard class 2 2-6-2Ts. They were specifically designed for the Bachmann Ivatt 2-6-2T body combined with a Comet chassis and the DJH standard class 2 kit.

These parts were commissioned by Dave Holt to detail his models and they were drawn up using the dimensioned sketches he provided. They have been made available due to numerous requests. As I have little working knowledge of the parts or indeed the prototypes and models for which they were designed I am unable to provide my usual sort of instructions for them. Instead, I have assembled the sketches from which the parts were drawn. These are probably much better than my usual waffle anyway and should illustrate how things go together.

What's included

Balance Weights (to suit the Gibson driving wheel) x 6	
Cab doors x 1 mirrored pair	Page 2
Lamp Irons x 9	Page 3
Injector brackets x 2	Page 4
Injector body x 2	Page 5
Injector overflow x 2	Page 6
Buffer beam gussets and step brackets x 1 loco's worth	Pages 7 & 8
Vacuum diaphragm bracket x 2	Page 9
Standard 2 lubricator drive x 1 mirrored pair	Page 10
Tank straps x 3 lengths all in pairs	Page 11
Shedcode plate backing x 2	

Notes

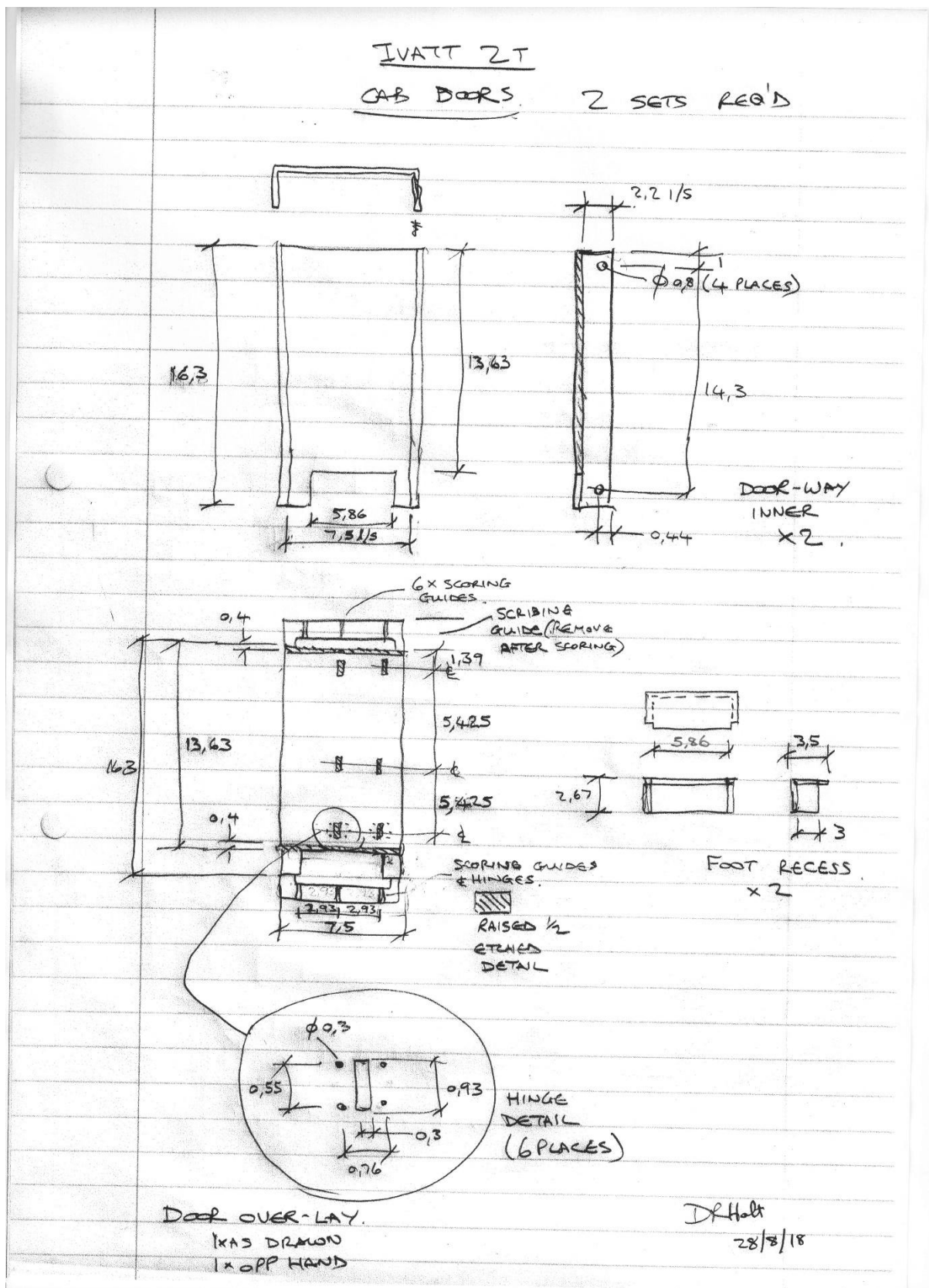
The balance weights are designed to be double thickness. The fret folds double to achieve this. 1mm diameter wire can be used to align the two halves of the surrounding fret. The weights for the centre axle are deeper than the others.

Check hole sizes and open out, if necessary, before removing the parts from the fret.

Any questions, don't ask me!

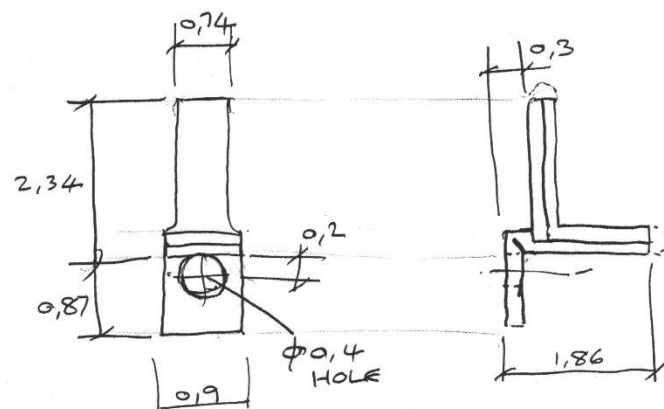
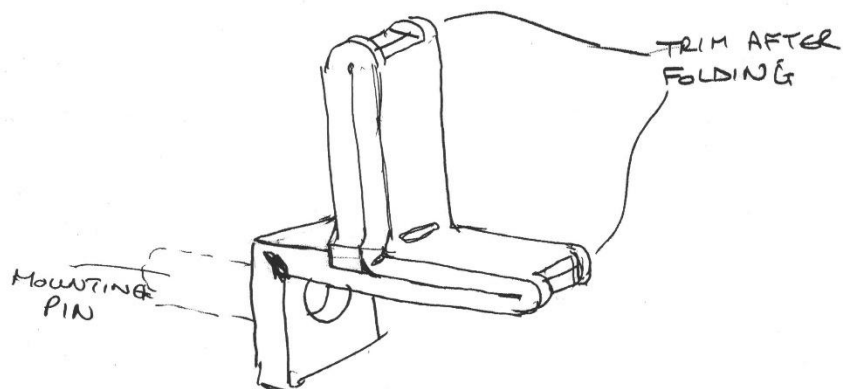
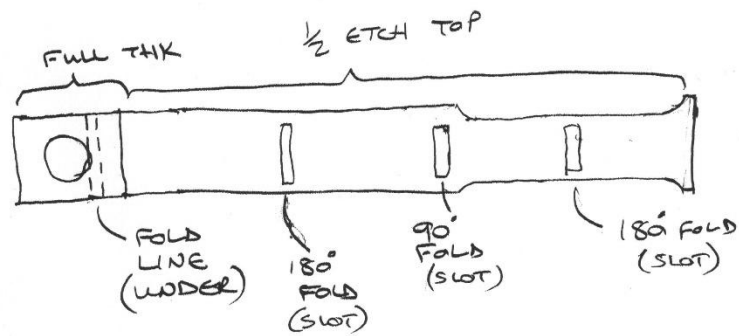
Justin Newitt - September 2021

Cab Doors



Lamp Irons

BR STD 2 TANK BUNKER LAMP IRONS



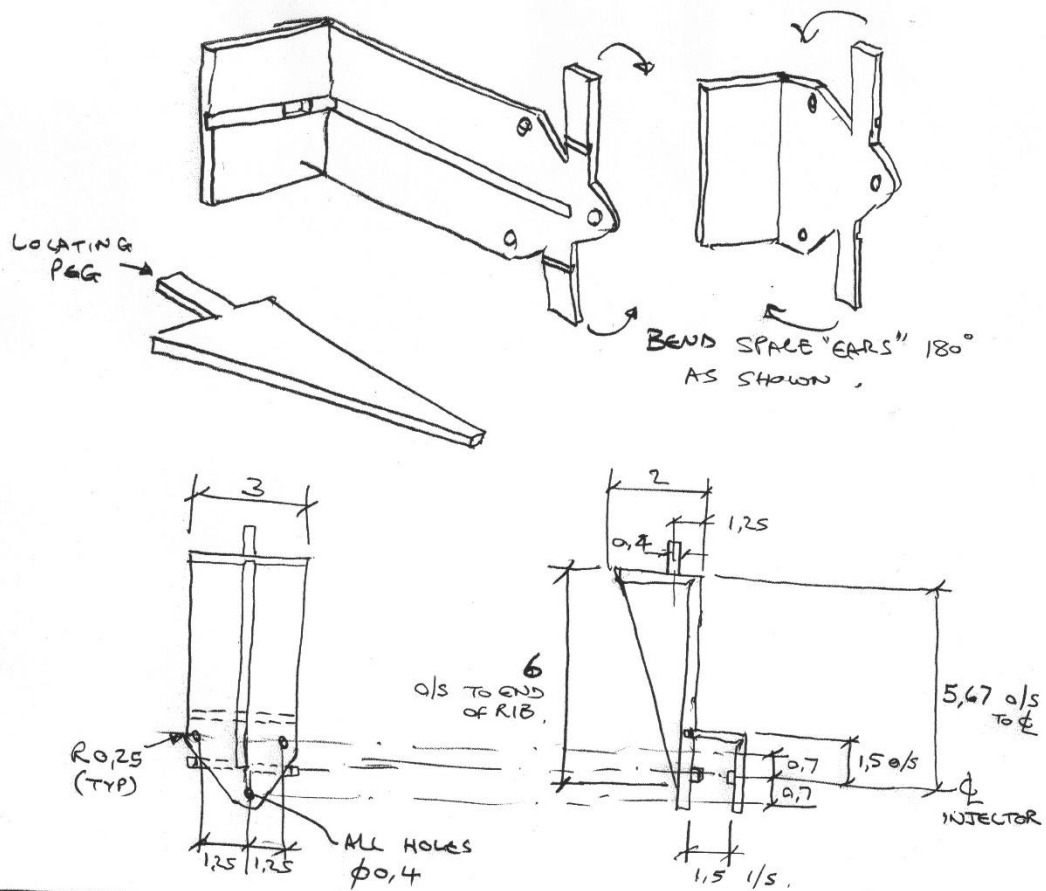
D. Hall
8/5/18

Injector Bracket

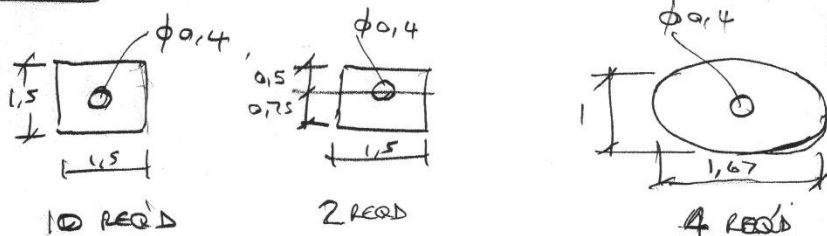
IVATT CL.2 2-6-2 T.

INJECTOR PARTS

MOUNTING BRACKET - 2 REQ'D

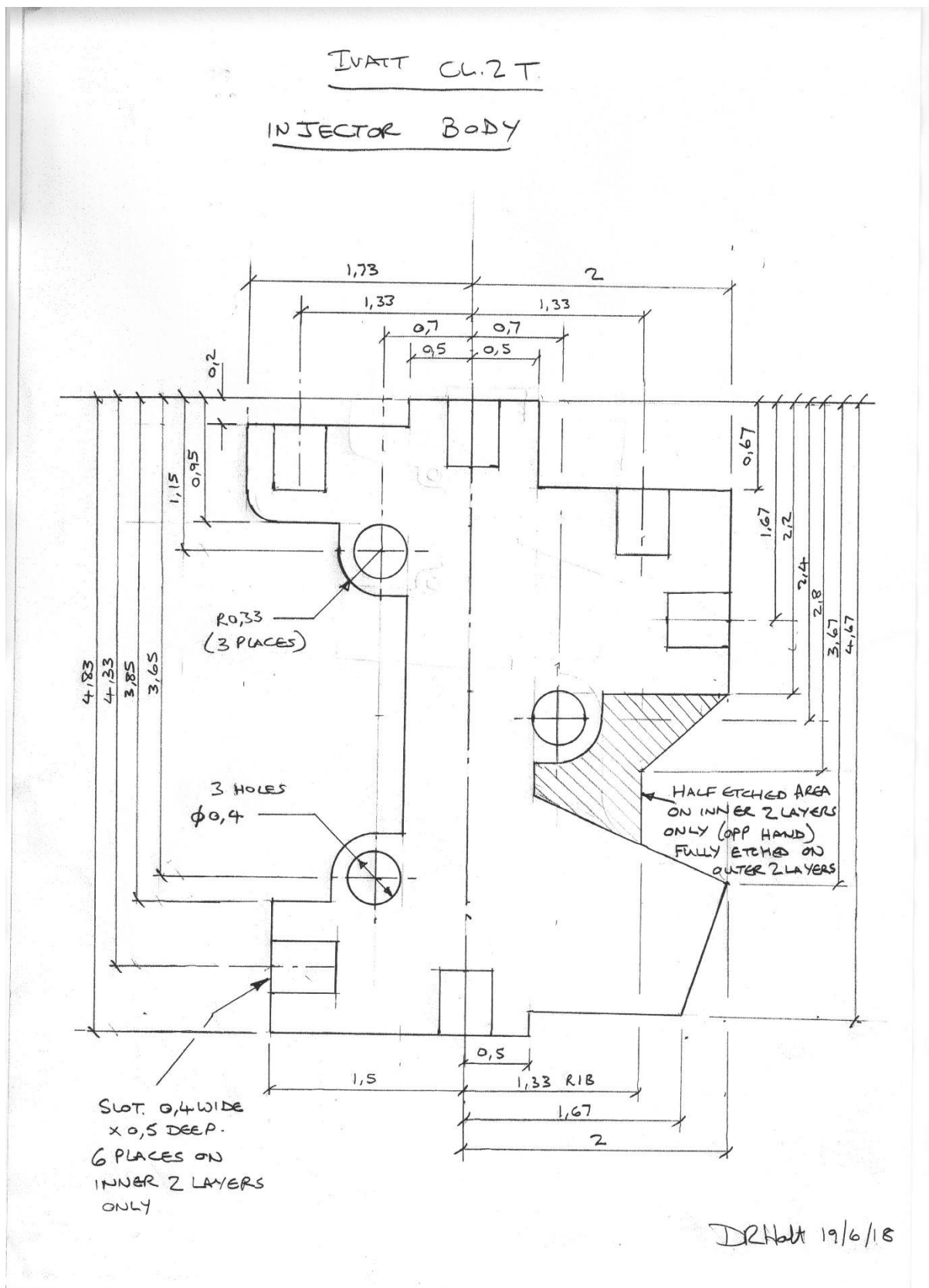


FLANGES



DR. HALL
14/6/15

Injector Body

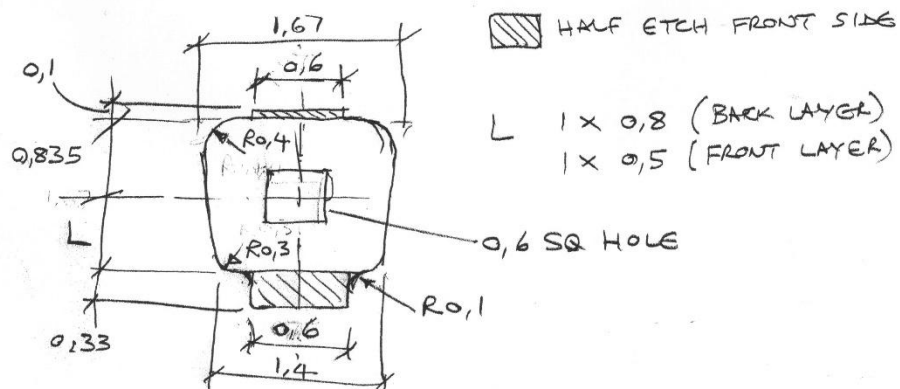


Injector Overflow

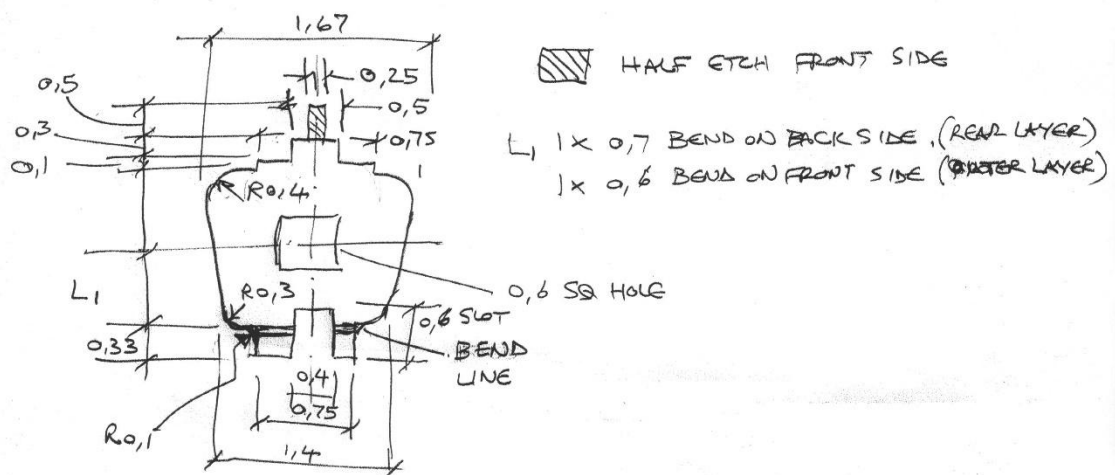
IVATT CL 2

INJECTOR OVERFLOW BODY - 2 REQ'D.

OUTER LAYERS (x 2)



INNER LAYERS (x 2)

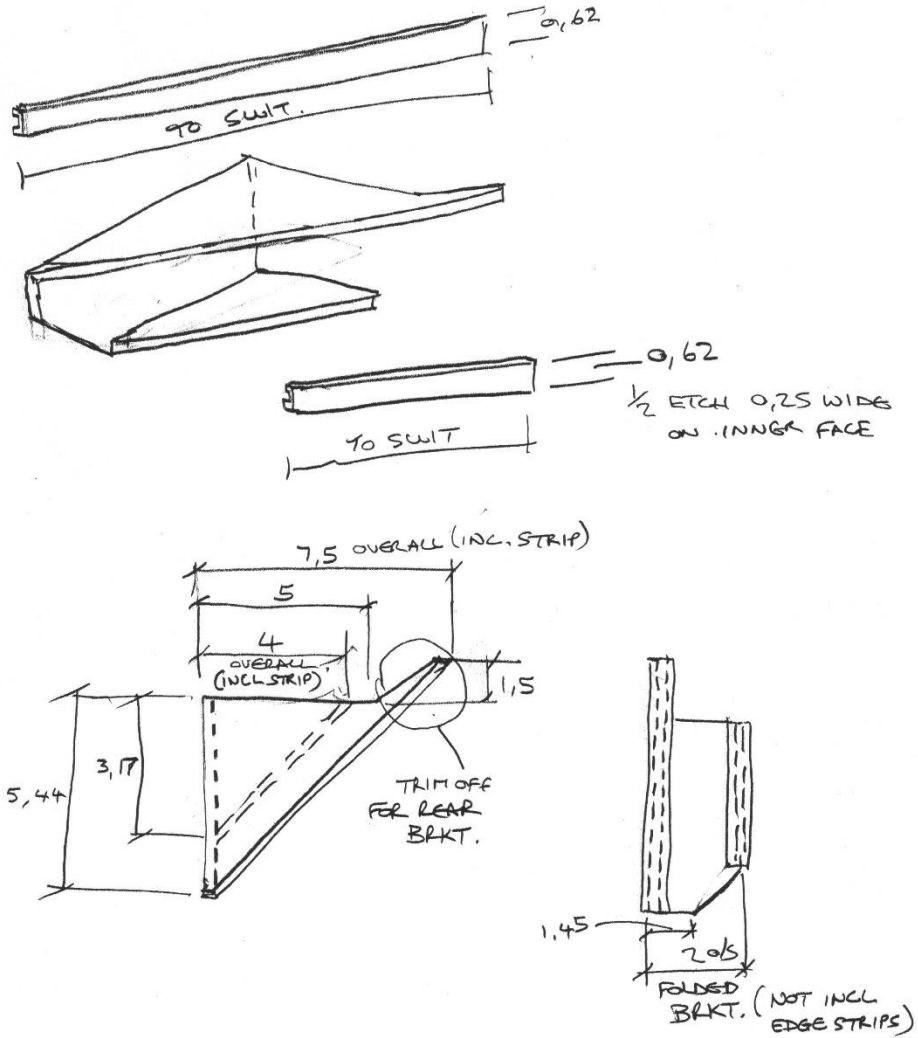


DR: Holt 27/8/18

Buffer Beam Brackets

WATT CL2 2-6-2 T.

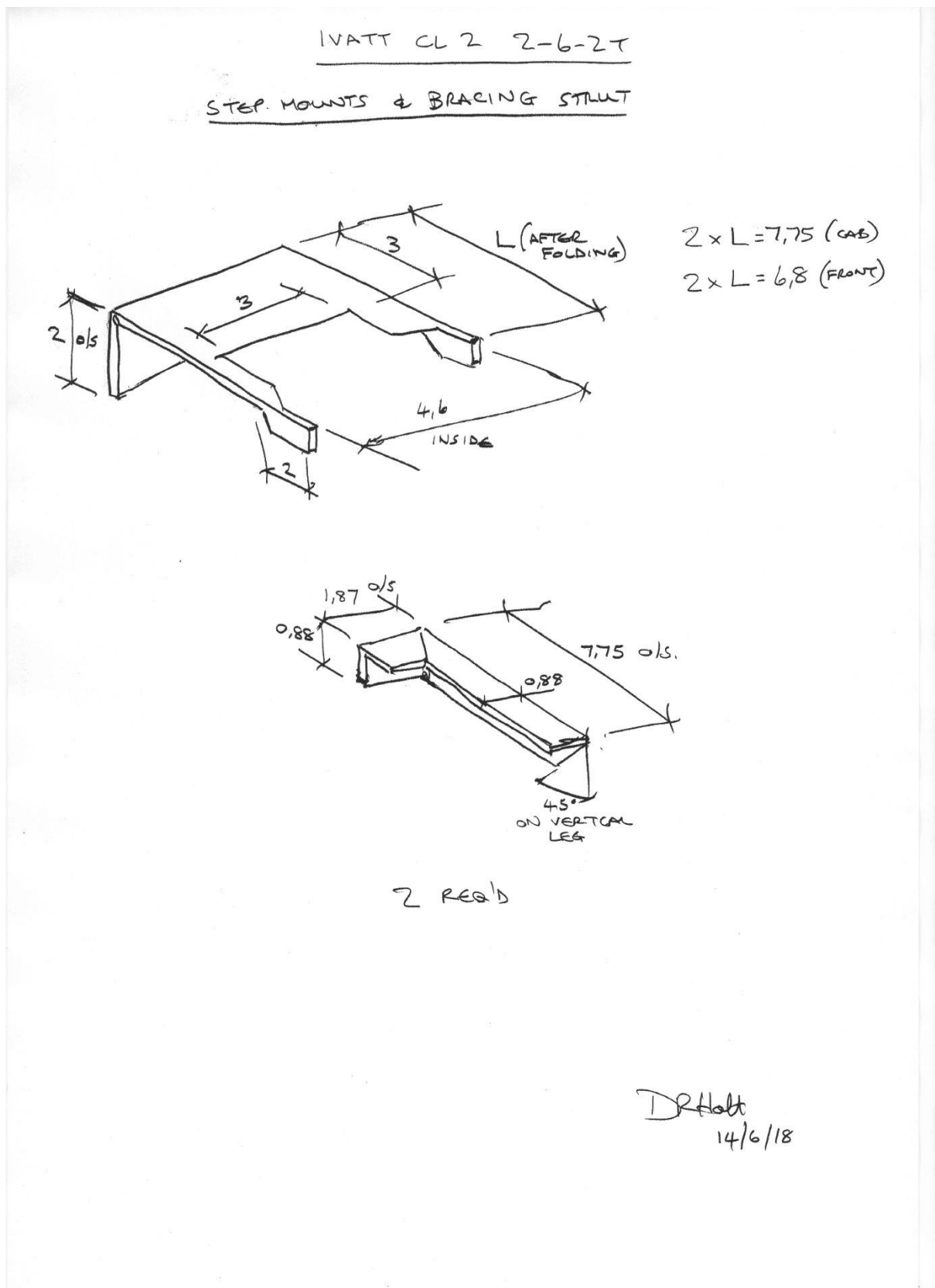
BUFFER BEAM REINFORCING BRKS.



4 REQD.

D. Holt.
14/6/18

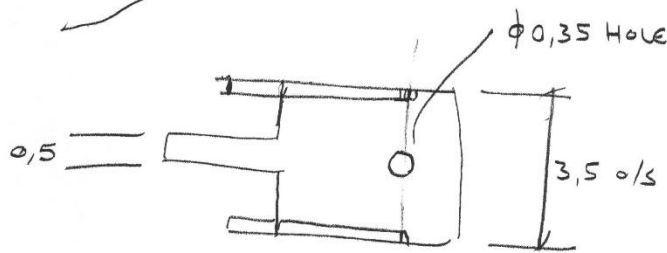
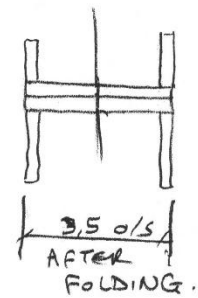
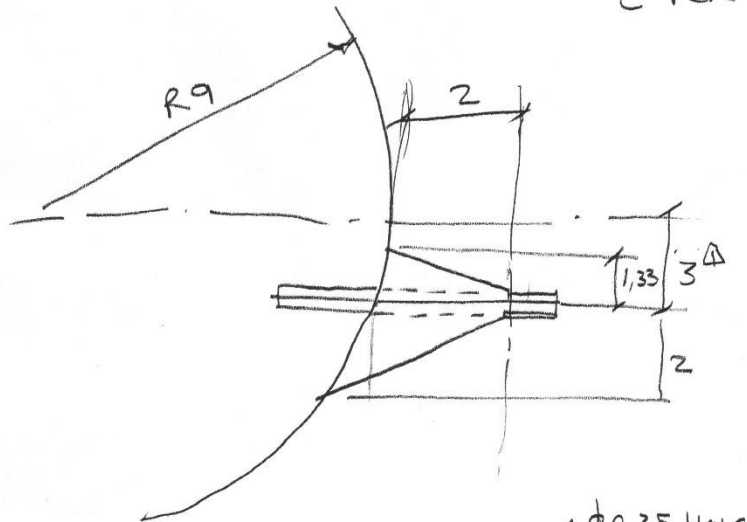
Step Brackets



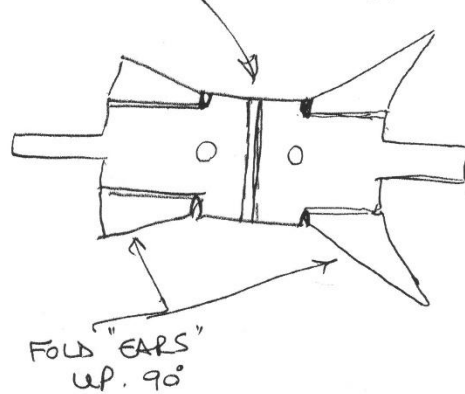
Vacuum Diaphragm Bracket

VACUUM DIAPHRAGM SUPPORTS

2 PER SET. 0,25 THK



FOLD DOWN .180°



DR Holt
5/4/18
Rev 1
6/4/18

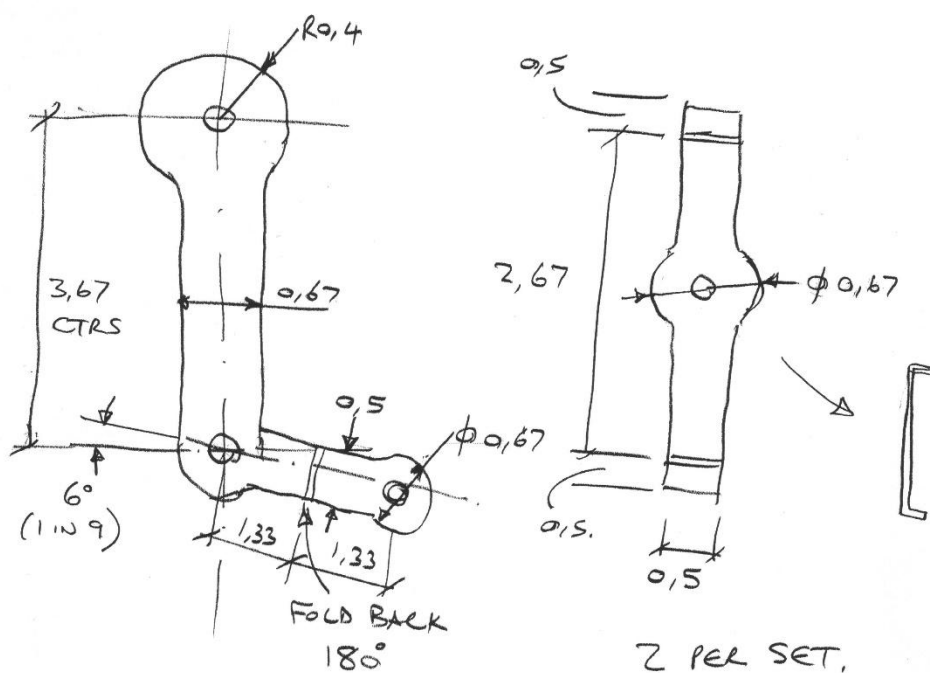
Lubricator Drive

BR STD Z TAWK.

LUBRICATOR DRIVE & INDICATOR

0,25 mm THK

ALL HOLES ϕ 0,35



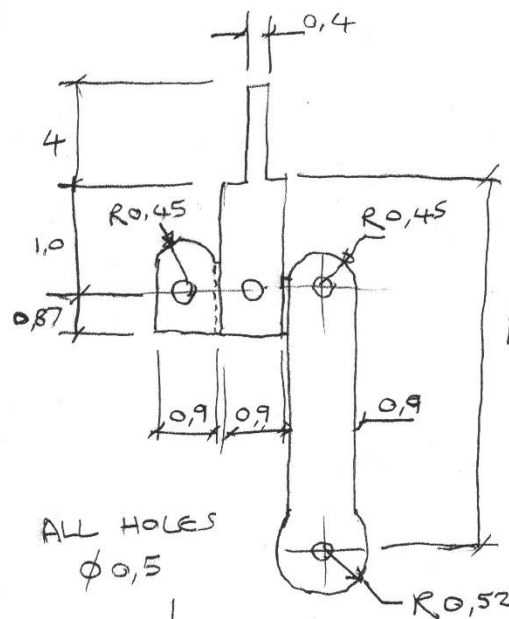
ONE AS DRAWN }
ONE OP. HAND } PER SET

DR Holt
20/4/18

Tank Straps

CL 2 TANK STRAPS

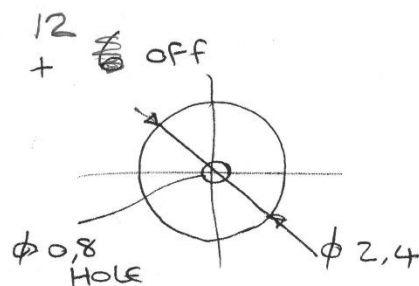
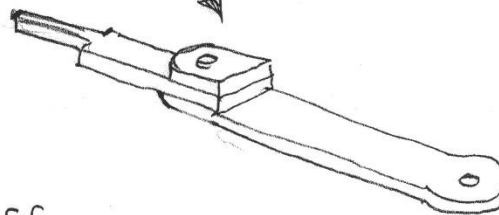
ALL 0,25 THK



L 2x L = 6,2
2x L = 5,6
2x L = 5,0

ALL HOLES
 $\phi 0,5$

FOLDS AS "Z" TO
GIVE



Dave Holt
5/4/18